



schurman
machine inc.

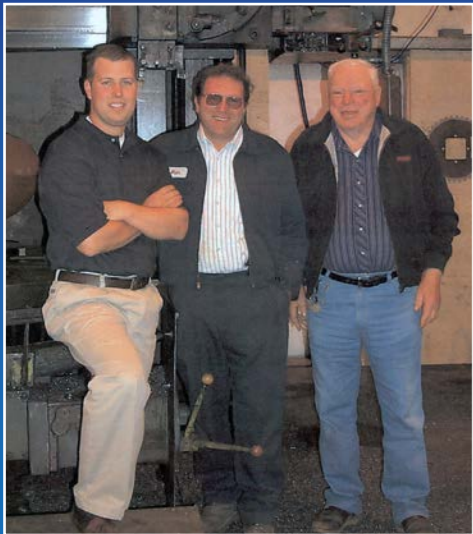


QUALITY. EXPERTISE. SOLUTIONS.

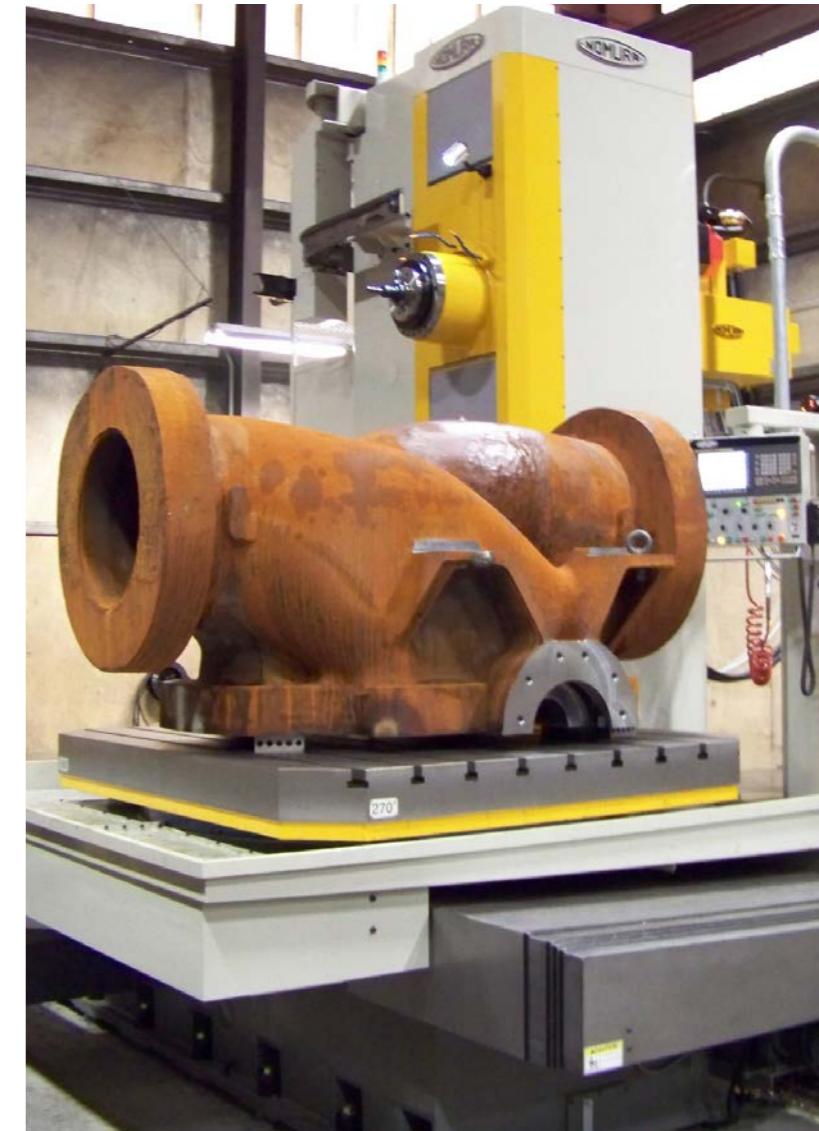
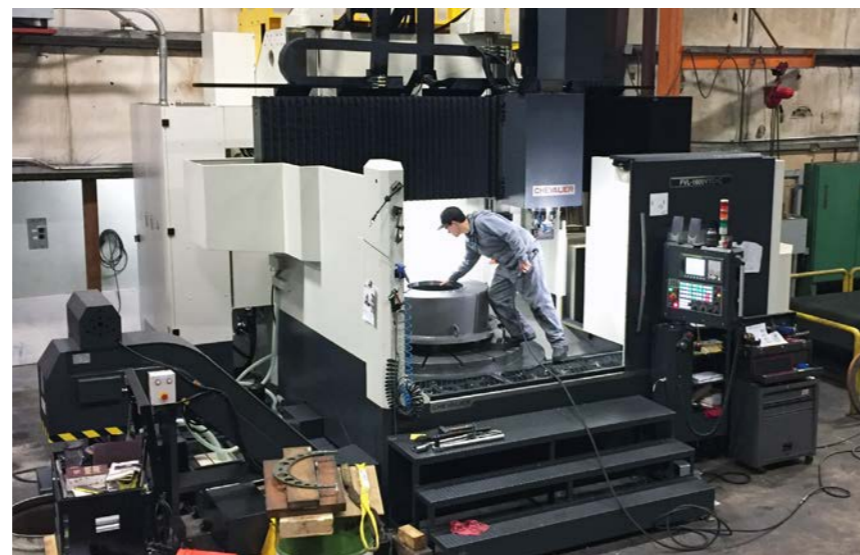
Specializing in Heavy Industrial Machining, Fabrication, Repair, & Assembly

"Over 60 Years of Service"

www.schurmanmfg.com



Since 1957, Schurman Machine, Inc. has grown into a respected job shop by maintaining a meticulous commitment to excellence. Our shop is large enough to handle any of your heavy-duty industrial demands, and we're staffed by top-notch craftsmen who pride themselves on the quality of their work.



Our mission is to maintain a grassroots approach to business. Continuous improvement is our foundation, built upon dedication and commitment to our customers and employees. We are an empowered team that creates profit and stability.

Schurman Machine inc.

Specializing in Heavy Industrial Machining, Repair and Fabrication

Service

Schurman Machine is capable of producing a broad range of parts, subassemblies and complete machines according to your specifications. From heavy equipment repair to machining, fabricating, and welding, allow Schurman Machine to make your idea a reality.

Quality

We concentrate on working with each customer individually to build a quality product. We begin with your design and schedule the job according to your requirements. No detail is overlooked by our team. We pride ourselves in delivering quality parts, on time.

QUALITY. EXPERTISE. SOLUTIONS.

Machinery

- Vertical Boring Mill 127"
- CNC Planer Mill 36' x 101" x 52"
- CNC Horizontal Mill 118"x 90"x 55"
- CNC Vertical Mill 96" x 32" x 30"
- CNC Vertical Turning Lathe 78.7" Dia x 53" High
- CNC Lathe 15" x 36 1/2"
- Lathes 36" Dia to 16' in Length
- Surface Grinding 18" x 72"
- Internal Key Seating
- Static Balancing
- 10 Ton Crane Capacity
- Hydro-Blast Parts Cleaner

Fabrication

- AWS Certified Weld Inspector
- AWS Certified Welders
- ASME Section 9 Certified Welders
- Experienced welding mild steel, as well as exotic material
- Our welders are experienced with dual shield welding, tig, stick, brazing, hard facing and Babbitt pouring

Quality

- Faro Edge (CMM) Inspection Arm
- ASQ Certified Quality Inspector

Assembly

Our Skilled assembly personnel can rebuild and assemble your equipment from the ground up.

Industries Served

- Pulp & Paper Mills
- Saw Mills
- Oil & Gas
- Pump & Valve
- Wind Turbine
- Mining
- Steel Mills
- Heavy Industrial Fabricators



schurman
machine inc.

23201 NE 10th Avenue | PO Box 999 | Ridgefield, WA 98642 | ph 360.887.3193 | fx 360.887.4914

www.schurmanmfg.com